

Misson Primary School

You already have your wings, we will help you fly



Complaints Policy

September 2023

Complaints Procedure Policy Misson Primary School

Who can make a complaint?

This complaints procedure is not limited to parents or carers of children that are registered at the school. Any person, including members of the public, may make a complaint to Misson Primary about any provision of facilities or services that we provide. Unless complaints are dealt with under separate statutory procedures (such as appeals relating to exclusions or admissions), we will use this complaints procedure.

The difference between a concern and a complaint

A concern may be defined as *'an expression of worry or doubt over an issue considered to be important for which reassurances are sought'*.

A complaint may be defined as *'an expression of dissatisfaction however made, about actions taken or a lack of action'*.

It is in everyone's interest that concerns and complaints are resolved at the earliest possible stage. Many issues can be resolved informally, without the need to use the formal stages of the complaints procedure. Misson Primary takes concerns seriously and will make every effort to resolve the matter as quickly as possible.

If you have difficulty discussing a concern with a particular member of staff, we will respect your views. In these cases, the headteacher, will refer you to another staff member. Similarly, if the member of staff directly involved feels unable to deal with a concern, the headteacher will refer you to another staff member. The member of staff may be more senior but does not have to be. The ability to consider the concern objectively and impartially is more important.

How to raise a concern or make a complaint

A concern or complaint can be made in person, in writing or by telephone. They may also be made by a third party acting on behalf of a complainant, as long as they have appropriate consent to do so. We may ask you for evidence of this consent.

Concerns should be raised initially with either the class teacher or headteacher. If the issue remains unresolved, the next step is to make a formal complaint.

Complainants should not approach individual governors to raise concerns or complaints. They have no power to act on an individual basis and it may also prevent them from considering complaints at later stages of the procedure.

Complaints against school staff (except the headteacher) should be made in the first instance, to the headteacher via the school office.

Complaints that involve or are about the headteacher should be addressed to the Chair of Governors, via the school office.

Complaints about the Chair, Vice Chair of Governors or any individual governor should be addressed to the Complaints Governor via the school office.

Complaints about the whole or majority of the governing body should be addressed to the Clerk to Governors via the school office.

If your complaint is in writing, please mark the correspondence as Private and Confidential.

For ease of use, a template complaint form is included at the end of this procedure. If you require help in completing the form, please contact the school office. You can also ask third party organisations like the Citizens Advice to help you.

In accordance with equality law, we will consider making reasonable adjustments if required, to enable complainants to access and complete this complaints procedure. For instance, providing information in alternative formats, assisting complainants in raising a formal complaint or holding meetings in accessible locations.

Anonymous complaints

We will not normally investigate anonymous complaints. The Headteacher or Chair of Governors, if appropriate, will determine whether the complaint warrants an investigation. However, the outcome of any investigation will not be provided to an anonymous complainant.

Time scales

You must raise the complaint within three months of the incident or, where a series of associated incidents have occurred, within three months of the last of these incidents. We will consider complaints made outside of this time frame if exceptional circumstances apply.

Complaints received outside of term time

We will consider complaints made during school holidays to have been received on the first school day after the holiday period.

Scope of this Complaints Procedure

This procedure covers all complaints about any provision of community facilities or services by Misson Primary. Any third party providers offering community facilities or services through the school premises, or using school facilities, should have their own complaints procedure in place, and complaints about these services will not be considered through this policy.

Complaints that are outside of this procedure will be dealt with under other statutory procedures, including those listed below.

Exceptions to this procedure	Who to contact
<ul style="list-style-type: none"> • Admissions to schools • Statutory assessments of Special Educational Needs • School re-organisation proposals 	<p>Concerns about admissions, statutory assessments of Special Educational Needs, or school re-organisation proposals should be raised with Nottinghamshire County Council.</p>
<p><input type="checkbox"/> Matters likely to require a Child Protection Investigation</p>	<p>Complaints about child protection matters are handled under our child protection and safeguarding policy and in accordance with relevant statutory guidance.</p> <p>If you have serious concerns, you may wish to contact the Local Authority Designated Officer (LADO) who has local responsibility for safeguarding or the Multi-Agency Safeguarding Hub (MASH). Tel: 0300 500 8090.</p>

<input type="checkbox"/> Exclusion of children from school*	<p>Further information about raising concerns about exclusion can be found at: www.gov.uk/school-discipline-exclusions/exclusions.</p> <p><i>*complaints about the application of the behaviour policy can be made through the school's complaints procedure.</i></p>
<input type="checkbox"/> Whistleblowing	<p>We have an internal whistleblowing procedure for all our employees, including temporary staff and contractors.</p> <p>The Secretary of State for Education is the prescribed person for matters relating to education for whistleblowers in education who do not want to raise matters direct with their employer. Referrals can be made at: www.education.gov.uk/contactus.</p> <p>Volunteer staff who have concerns about our school should complain through the school's complaints procedure. You may also be able to complain directly to the Local Authority or the Department for Education (see link above), depending on the substance of your complaint.</p>
<input type="checkbox"/> Staff grievances	<p>Complaints from staff will be dealt with under the school's internal grievance procedures.</p>
<input type="checkbox"/> Staff conduct	<p>Complaints about staff will be dealt with under the school's internal disciplinary procedures, if appropriate.</p> <p>Complainants will not be informed of any disciplinary action taken against a staff member as a result of a complaint. However, the complainant will be notified that the matter is being addressed in line with school's internal procedures.</p>
<input type="checkbox"/> Complaints about services provided by other providers who may use school premises or facilities	<p>Providers should have their own complaints procedure to deal with complaints about service. Please contact them direct.</p>
<input type="checkbox"/> National Curriculum - content	<p>Please contact the Department for Education at: www.education.gov.uk/contactus</p>

If other bodies are investigating aspects of the complaint, for example the police, local authority (LA) safeguarding teams or Tribunals, this may impact on our ability to adhere to the timescales within this procedure or result in the procedure being suspended until those public bodies have completed their investigations.

If a complainant commences legal action against Misson Primary in relation to their complaint, we will consider whether to suspend the complaints procedure in relation to their complaint until those legal proceedings have been concluded.

Withdrawal of a Complaint

If a complainant wants to withdraw their complaint at any stage of the procedure, we will ask them to confirm this in writing. Once received, we will confirm in writing to the complainant that this matter is now closed and the complaints process will cease.

Resolving complaints – the procedure.

The majority of concerns from parents, carers and any other interested parties who raise a concern or complaint are handled under the following procedures. At each stage in the procedure, Misson Primary wants to resolve the complaint. If appropriate, we will acknowledge that the complaint is upheld in whole or in part. In addition, we may offer one or more of the following:

- an explanation
- an admission that the situation could have been handled differently or better
- an assurance that we will try to ensure the event complained of will not recur
- an explanation of the steps that have been or will be taken to help ensure that it will not happen again and an indication of the timescales within which any changes will be made □ an undertaking to review school policies in light of the complaint □ an apology.

Informal Stage

Many concerns will be dealt with informally when you make them known to us. The first point of contact should be your child's teacher/form tutor. If your concerns are in respect of a particular member of staff, you should contact the Headteacher/Principal (or Head of Department as appropriate.) There is no need at this stage to make your concerns known in writing, but the staff member responsible for resolving the matter will keep a note of the nature of your concerns and any agreed actions.

Once your concern is made known to us, we will contact you by telephone or in writing as soon as possible and we may make arrangements to meet with you to discuss your concerns and desired outcomes in more detail to gain a better understanding. Any actions or monitoring of the situation that has been agreed will be communicated clearly and confirmed in writing to you.

If necessary, we will contact appropriate people who may be able to assist us with our enquiries into your concerns. We will normally update you on the progress of our enquiries within 10 school days. Once we have responded to your concern, you will have the opportunity of asking for the matter to be considered further. We would expect that the majority of concerns or complaints will be resolved at this early stage.

If you are still dissatisfied following this informal approach, your concern will become a formal complaint and we will deal with it at the next stage (Stage 1).

Stage 1

This stage in our procedures deals with written complaints. It applies where you are not happy with the informal approach to dealing with your concern, as outlined above. You should submit your written complaint within 10 school days at the end of discussions to resolve your complaint at the informal stage.

Normally, your written complaint should be addressed to the Headteacher/Principal. If, however, your complaint concerns the Headteacher/Principal personally, it should be sent to the school marked "for the attention of the Chair of Governors". Your written complaint should clearly state the reason for your complaint and what resolution you are seeking.

We will acknowledge your complaint in writing as soon as possible after receiving it. This will usually be within five school days. The acknowledgement letter will detail who will be investigating your complaint. This could be the Headteacher/Principal, Chair of Governors, Complaints Governor or another suitably experienced and impartial person nominated by the school.

We will enclose a copy of these procedures with the acknowledgement letter or email.

Normally, we would expect to respond in full to your complaint within 20 school days but if this is not possible we will write to explain the reason for the delay and let you know when we hope to be able to provide a full response.

As part of our consideration of your complaint, we may invite you to a meeting to discuss the complaint in order to fully understand the matters concerning you and how you feel the complaint can be resolved. If you wish, you can ask someone to accompany you to help you explain the reasons for your complaint.

The person investigating your complaint may also be accompanied by a suitable person if they wish. A note-taker may also be present.

Following the meeting, the person investigating your complaint will, where necessary, talk to witnesses and take statements from others involved. If the complaint centres on a pupil, we may talk to the pupil concerned and, where appropriate, others present at the time of the incident in question. Witnesses will be reminded that the statements they make, whilst confidential, may be used as evidence later in the procedure and could therefore be seen by other parties considering the complaint (e.g. Governor Complaints Panel members). It may be necessary to redact or remove the identity of the person giving the statement or any third party it may mention e.g. another pupil.

We will normally talk to pupils with a parent or carer present, unless this would delay the investigation of a serious or urgent complaint, or where a pupil has specifically said that they would prefer the parent or carer not to be involved. In such circumstances, we will ensure that another member of staff, with whom the pupil feels comfortable, is present.

The person investigating your complaint will keep written/typed, signed and dated records of all meetings and telephone conversations, and any other related documentation.

Once the person investigating your complaint has established all the relevant facts, they will send you a written response to your complaint. They will give an explanation of their decision and the reasons for it. If follow-up action is needed, they will indicate what the school are proposing to do.

You may be invited to a meeting to discuss the outcome as part of our commitment to building and maintaining good relations with you.

The person investigating your complaint may decide that we have done all we can to resolve the complaint, in which case we may use our discretion to close the complaint at this point. Please see the "Closure of Complaints" section below for further information about this process.

If you are unhappy with the outcome of your complaint, you may wish to proceed to stage two, as detailed below.

If your complaint is:

- jointly about the Chair and Vice Chair or
- the entire governing body or
- the majority of the governing body

Stage 1 will be considered by an independent investigator appointed by the governing body following the process outlined above.

Stage 2 - consideration by a Governors Complaints Panel

If your complaint has already been through Stage 1 and you are not satisfied with the outcome you can ask for your complaint to be considered at a Governors Complaints Panel. This is a formal process, and the ultimate recourse at school level. Should your complaint be upheld fully by the school at Stage 1 and any residual issues cannot be addressed by the complaints procedure, a request to move to Stage 2 may be refused. You will be advised of this in writing by the Chair of Governors and the decision will be final.

The purpose of Stage 2 is to give you the chance to present your case in front of a panel of 3 governors who have no prior knowledge of the details of the complaint or any connection to you or your family (either formally or informally) and who can, therefore, consider it without prejudice. If necessary, the school can appoint governors (or associate members) from another school to be present on the panel.

The Governors Complaints Panel hearing operates according to the following formal procedures:

Within 10 school days of receiving the outcome of your complaint at Stage 1, you must write to the Chair of Governors clearly stating the reasons for your appeal against that outcome. Requests received outside of this time frame will only be considered if exceptional circumstances apply.

You should state specifically why you are not satisfied with the outcome at Stage 1 and what resolution you are seeking. If the reasons for your appeal against the outcome at Stage 1 are not clear, the school may come back to you for further clarity. If clarification is not received from you, the Chair of Governors may consider that there may be a case to close the complaint without a Stage 2 Governors Complaints Panel, as detailed in the procedure below (Closure of Complaint Section).

A clerk will be appointed who will acknowledge your request to move to Stage 2 and will convene a panel of three governors. The clerk will aim to arrange for the panel meeting to take place within 20 school days of acknowledging your request for a panel meeting (subject to the availability of all parties).

You will be asked by the clerk whether you wish to provide any further written documentation in support of your appeal. You should only provide information that is relevant up to the time of raising your concerns and not issues that have arisen subsequent to the investigation findings. You will also be asked whether you will be calling any witnesses and if you are being accompanied by a companion.

The Headteacher/Principal and/or person who investigated your complaint (as appropriate) will also be asked to submit documentation related to the investigation and the outcome in response to your appeal. They will also be asked to provide details of any witnesses that they intend to call and any companions.

Please note that representatives from the media are not permitted to attend.

All parties will be asked for dates when they will be available and you will be informed, at least ten school days in advance, of the date, time and place of the meeting and who will be attending including witnesses and companions. We hope you will feel comfortable with the meeting taking place in the school but we will do what we can to make alternative arrangements if you prefer. You should advise when you submit your grounds of appeal (or as soon as possible thereafter) if you would prefer for the meeting to take place at an alternative venue.

The clerk will provide all parties with a date to submit the documentation and names of witnesses/companions which **must** be adhered to. Once all the documentation has been received,

the clerk will collate and distribute the papers to all parties, **at the same time** at least five days prior to the panel meeting. All parties will receive copies of all the papers presented for consideration by the Governor Complaints Panel.

With the invite letter, you will be provided with a copy of the Procedure for the Complaints Panel Hearing which explains what will happen at the hearing.

If you reject the offer of three proposed dates, without good reason, the clerk will decide when to hold the meeting. It will then proceed in your absence on the basis of written submissions from all parties.

The chair of the panel will bear in mind that the formal nature of the meeting can be intimidating for you and will do their best to put you at your ease.

As a general rule, no evidence (documentary or otherwise) or witnesses previously undisclosed should be introduced into the hearing by any of the participants. If any party wishes to do so, a request must be made to the panel and, if allowed, the hearing will be adjourned so that the other parties have a fair opportunity to consider and respond to the new evidence. The adjournment will be managed by the clerk.

The chair of the panel will ensure that the hearing is properly minuted. The minutes are strictly confidential and should not be shared with parties external to the process. You may not record the meeting without the express permission of the chair of the panel and this is not normally something that is allowed. Such recordings can often be a hindrance and may prevent all parties from speaking freely. It is advisable that no parties make covert recording of the meeting as this may hinder a satisfactory resolution to the complaint. However, recording may be permitted if a complainant's own disability or special needs require it. Consent must be sought from all parties prior to the meeting and consent will be recorded in any minutes taken.

In closing the hearing, the chair will explain that the panel will now consider its decision and that written notice of the decision will be sent to you by the clerk within 5 school days. However, if this timescale cannot be met, you will be advised accordingly and a new timescale determined. The panel will then consider the complaint and all the evidence and make the following decisions:

- Dismiss or uphold the complaint in whole or in part
- Decide on the appropriate action to be taken to resolve the complaint, if it is upheld in whole or in part
- Recommend changes to the schools systems and procedures to ensure that problems of a similar nature do not reoccur.

The clerk will send you and the Headteacher/Principal, the chair of governors and the person who investigated your complaint (as appropriate) a letter outlining the decision of the panel. The letter will also explain that you are entitled to have the handling of the complaint reviewed by the Secretary of State for Education – See below.

We will keep a copy of all correspondence and notes on file in the school's records but separate from any pupils' personal records.

If at any formal stage of the complaint it is determined that staff disciplinary or capability proceedings are necessary in order to resolve the issue, the details of this action will remain confidential to the headteacher/principal and/or the individual's line manager. You are not entitled to participate in those proceedings or receive any detail about them.

If your complaint is:

- jointly about the Chair and Vice Chair or

- the entire governing body or
- the majority of the governing body

Stage 2 will be heard by a committee of independent governors following the process outlined above. Support will be sought from NCC Governor Services to facilitate this.

Final Steps

If you believe the school did not handle your complaint in accordance with the published complaints procedure or they acted unlawfully or unreasonably in the exercise of their duties under education law, you can contact the Department for Education after Stage 2 has been completed.

The Department for Education will not normally reinvestigate the substance of complaints or overturn any decisions made by Misson Primary. They will consider whether Misson Primary has adhered to education legislation and any statutory policies connected with the complaint.

You can refer your complaint to the Department for Education online at: www.education.gov.uk/contactus, by telephone on: 0370 000 2288 or by writing to:

Department for Education
Piccadilly Gate
Store Street
Manchester M1
2WD.

Managing serial and persistent complaints

Misson Primary is committed to dealing with all complaints fairly and impartially, and to providing a high quality service to those who complain. We will not normally limit the contact complainants have with our school. However, we do not expect our staff to tolerate unacceptable behaviour and will take action to protect staff from that behaviour, including that which is abusive, offensive or threatening.

Misson Primary defines unreasonable behaviour as that which hinders our consideration of complaints because of the frequency or nature of the complainant's contact with the school, such as, if the complainant:

- refuses within a reasonable timeframe to articulate their complaint or specify the grounds of a complaint or the outcomes sought by raising the complaint, despite offers of assistance
- refuses to co-operate with the complaints investigation process
- refuses to accept that certain issues are not within the scope of the complaints procedure
- insists on the complaint being dealt with in ways which are incompatible with the complaints procedure or with good practice
- introduces trivial or irrelevant information which they expect to be taken into account and commented on
- raises large numbers of detailed but unimportant questions, and insists they are fully answered, often immediately and to their own timescales
- makes unjustified complaints about staff who are trying to deal with the issues, and seeks to have them replaced

- changes the basis of the complaint as the investigation proceeds
- repeatedly makes the same complaint (despite previous investigations or responses concluding that the complaint is groundless or has been addressed)
- refuses to accept the findings of the investigation into that complaint where the school's complaint procedure has been fully and properly implemented and completed including referral to the Department for Education
- seeks an unrealistic outcome
- makes excessive demands on school time by frequent, lengthy and complicated contact with staff regarding the complaint in person, in writing, by email and/or by telephone while the complaint is being dealt with
- uses threats to intimidate
- uses abusive, offensive or discriminatory language or violence
- knowingly provides falsified information
- publishes unacceptable information on social media or other public forums.

You should try to limit your communication with the school that relates to your complaint, while the complaint is being progressed. It is not helpful if repeated correspondence is sent (either by letter, phone, email, or via social media), as it could delay the outcome being reached.

Whenever possible, the headteacher or Chair of Governors will discuss any concerns with you informally before applying an '*unreasonable*' marking.

If your behaviour continues, the headteacher will write to you explaining that their behaviour is unreasonable and ask you to change it. For complainants who excessively contact Misson Primary causing a significant level of disruption, we may specify methods of communication and limit the number of contacts in a communication plan. This will be reviewed after six months.

In response to any serious incident of aggression or violence, we will immediately inform the police and communicate our actions in writing. This may include barring an individual from Misson Primary

Closure of Complaints

Very occasionally, the school will feel that it needs, regretfully, to close a complaint where the complainant is still dissatisfied.

We will do all we can to help to resolve a complaint against the school but sometimes it is simply not possible to meet all of the complainant's wishes. Sometimes it is simply a case of "agreeing to disagree".

If a complainant persists in making representations to the school – to the Headteacher/Principal, Chair of Governors, Local Authority or anyone else – this can be extremely time-consuming and can detract from our responsibility to look after the interests of all the children in our care.

The Chair of Governors will write to the complainant explaining that the matter has been dealt with fully in line with the school complaints procedure, and therefore the case is now closed.

After closing a complaint, if the school receives a duplicate (or substantially the same) complaint from a partner, spouse, grandparent, child or other person in a close relationship with the original complainant, the school can inform the new complainant that the school has already considered the complaint and the process is now complete.

In exceptional circumstances, closure may occur before a complaint has reached Stage Two of the complaint procedure. This is because a Governor Complaints Panel takes considerable time and effort to set up and we must be sure that it is likely to assist the process of resolving the complaint.

The Chair of Governors may decide, therefore, that every reasonable action has been undertaken to resolve the complaint and that a Governor Complaints Panel would not help to move things forward.

The complainant will be provided with the contact details of the Department for Education (as detailed above) if they wish to take the matter further.

Complaint Form

Please complete and return to the headteacher who will acknowledge receipt and explain what action will be taken.

Your name:	
Pupil's name (if relevant):	
Your relationship to the pupil (if relevant):	
Address:	
Postcode:	Evening telephone number: Email
Day time telephone number:	
Address:	

Please give details of your complaint, including whether you have spoken to anybody at the school about it.

What actions do you feel might resolve the problem at this stage?

Are you attaching any paperwork? If so, please give details.
Signature:
Date:
Official use
Date acknowledgement sent:
By who:
Complaint referred to:
Date:

Roles and Responsibilities Complainant

The complainant will receive a more effective response to the complaint if they:

- explain the complaint in full as early as possible
- co-operate with the school in seeking a solution to the complaint
- respond promptly to requests for information or meetings or in agreeing the details of the complaint
- ask for assistance as needed
- treat all those involved in the complaint with respect
- refrain from publicising the details of their complaint on social media and respect confidentiality.

The Role of the Investigator

The investigator's role is to establish the facts relevant to the complaint by:

- providing a comprehensive, open, transparent and fair consideration of the complaint through:
 - sensitive and thorough interviewing of the complainant to establish what has happened and who has been involved
 - interviewing staff and children/young people and other people relevant to the complaint
 - consideration of records and other relevant information
 - analysing information
- liaising with the complainant and the complaints co-ordinator as appropriate to clarify what the complainant feels would put things right.

The investigator should:

- conduct interviews with an open mind and be prepared to persist in the questioning
- keep notes of interviews or arrange for an independent note taker to record minutes of the meeting
- ensure that any papers produced during the investigation are kept securely pending any appeal
- be mindful of the timescales to respond
- prepare a comprehensive report that sets out the facts, identifies solutions and recommends courses of action to resolve problems.

Clerk to the Complaints Panel

The Clerk is the contact point for the complainant and the committee and should:

- ensure that all people involved in the complaint procedure are aware of their legal rights and duties, including any under legislation relating to school complaints, education law, the Equality Act 2010, the Freedom of Information Act 2000, the Data Protection Act (DPA) 2018 and the General Data Protection Regulations (GDPR)
- set the date, time and venue of the meeting, ensuring that the dates are convenient to all parties (if they are invited to attend) and that the venue and proceedings are accessible
- collate any written material relevant to the complaint (for example; stage 1 paperwork, school and complainant submissions) and send it to the parties in advance of the meeting within an agreed timescale
- record the proceedings
- circulate the minutes of the meeting
- notify all parties of the committee's decision.

Chair of the Governor Complaints Panel

The Chair of the Governor Complaints Panel, who is nominated in advance of the panel meeting, should ensure that:

- both parties are asked (via the Clerk) to provide any additional information relating to the complaint by a specified date in advance of the meeting

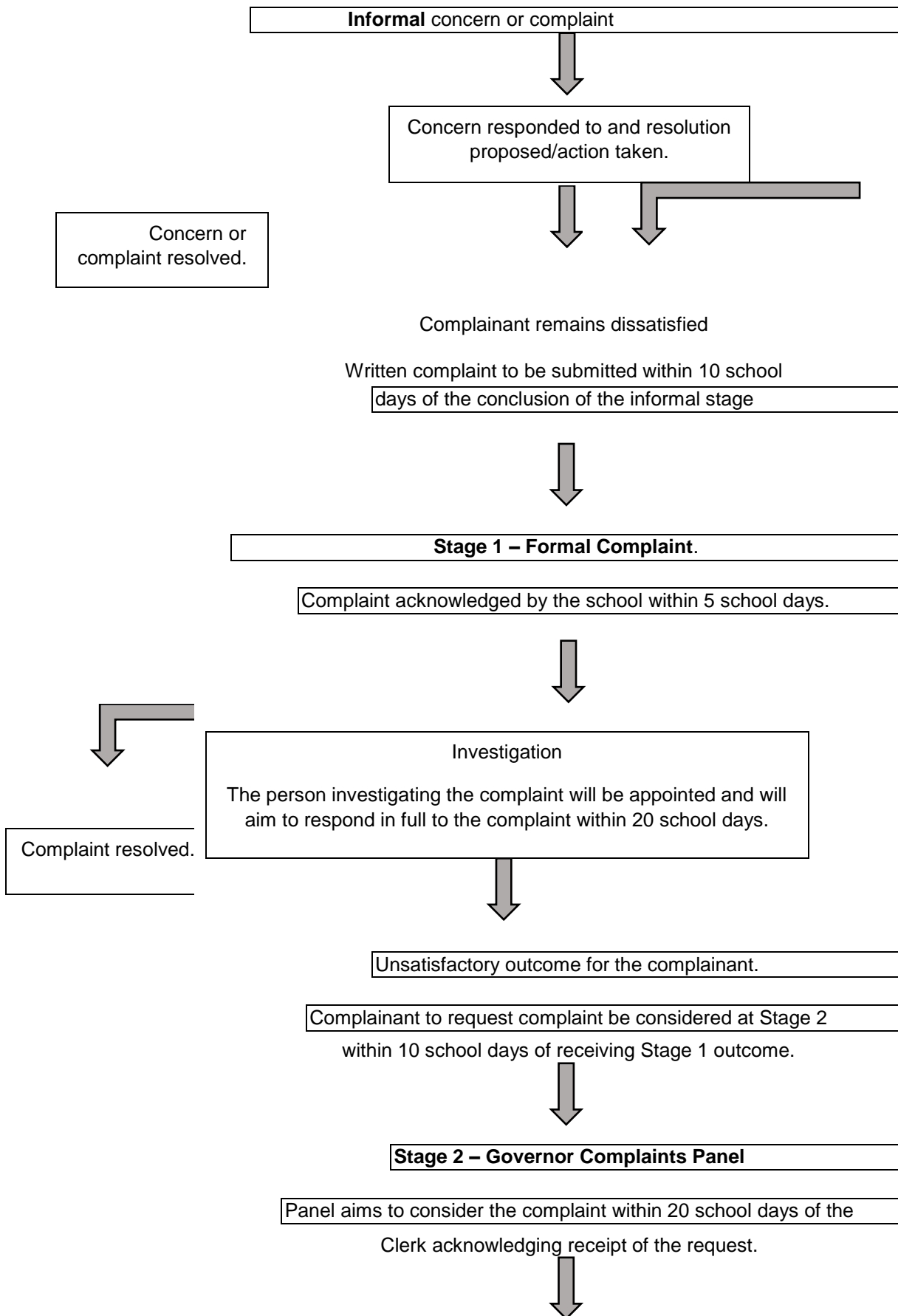
- the meeting is conducted in an informal manner, is not adversarial, and that, if all parties are invited to attend, everyone is treated with respect and courtesy
- complainants who may not be used to speaking at such a meeting are put at ease. This is particularly important if the complainant is a child/young person
- the remit of the panel meeting is explained to the complainant
- written material is seen by everyone in attendance, provided it does not breach confidentiality or any individual's rights to privacy under the Data Protection Act 2018 or General Data Protection Regulations.
- both the complainant and the school are given the opportunity to make their case and seek clarity, either through written submissions ahead of the meeting or verbally in the meeting itself
- the issues are addressed
- key findings of fact are made
- the panel is open-minded and acts independently
- no member of the panel has an external interest in the outcome of the proceedings or any involvement in an earlier stage of the procedure
- the meeting is minuted
- they liaise with the Clerk.

Governor Complaints Panel Members

Panel members should be aware that:

- the meeting must be independent and impartial, and should be seen to be so
- No governor may sit on the panel if they have had a prior involvement in the complaint or in the circumstances surrounding it or have any family/personal connection with the complainant.
- the aim of the meeting should be to resolve the complaint and achieve reconciliation between the school and the complainant. We recognise that the complainant might not be satisfied with the outcome if the meeting does not find in their favour. It may only be possible to establish the facts and make recommendations.
- many complainants will feel nervous and inhibited in a formal setting. Parents/carers often feel emotional when discussing an issue that affects their child. Extra care needs to be taken when the complainant is a child/young person and present during all or part of the meeting. Careful consideration of the atmosphere and proceedings should ensure that the child/young person does not feel intimidated.
- The panel should respect the views of the child/young person and give them equal consideration to those of adults. If the child/young person is the complainant, the panel should ask in advance if any support is needed to help them present their complaint. Where the child/young person's parent is the complainant, the panel should give the parent the opportunity to say which parts of the meeting, if any, the child/young person needs to attend. However, the parent should be advised that agreement might not always be possible if the parent wishes the child/young person to attend a part of the meeting that the panel considers is not in the child/young person's best interests.
- **the welfare of the child/young person is paramount.**

COMPLAINTS PROCEDURE



The clerk will confirm in writing the decision of the panel within 5 school days of the panel meeting. School Procedure concluded. If the complainant

remains unsatisfied they must contact the Department for Education.17

MANAGING SCHOOL COMPLAINTS

Complaint relates to:	Informal	Stage 1 Formal (Investigation)	Stage 2 Complaint Panel
Pupils, parents or staff (other than the Headteacher)	The appropriate member of staff	Headteacher or other Senior Manager	Panel appointed by the Chair of Governors
The Headteacher	No informal stage (go to Stage 1)	The Chair of Governors, Complaints Governor or impartial person nominated by the Chair	Panel appointed by the Chair of Governors (or Vice Chair if the Chair has had previous involvement).
A Governor or group of Governors (other than the Chair of Governors)	The Chair of Governors	Another nominated non- staff governor (which could include a governor/associate member from another school).	Panel appointed by the Chair of Governors (or Vice Chair if the Chair has had previous involvement) (The panel could include a governor/associate member from another school).
The Chair of Governors (or a group of governors including the Chair of Governors)	The Vice Chair of Governors (or other impartial governor if the Vice Chair is included in the complaint)	Another nominated non- staff governor (which could include a governor/associate member from another school).	Panel appointed by the Vice Chair of Governors. (The panel could include governors or associate members from another school).
The whole body of Governors	No informal stage (go to Stage 1)	School to refer the complaint to Nottinghamshire County Council Governor Services who will nominate an investigating officer.	Nottinghamshire County Council Governor Services to nominate an independent panel of governors or associate members.

18 Who can make a complaint?

This complaints procedure is not limited to parents or carers of children that are registered at the school. Any person, including members of the public, may make a complaint to Misson Primary School about any provision of facilities or services that we provide. Unless complaints are dealt with under separate statutory procedures (such as appeals relating to exclusions or admissions), we will use this complaints procedure.

The difference between a concern and a complaint

A concern may be defined as *'an expression of worry or doubt over an issue considered to be important for which reassurances are sought'*.

A complaint may be defined as *'an expression of dissatisfaction however made, about actions taken or a lack of action'*.

It is in everyone's interest that concerns and complaints are resolved at the earliest possible stage.

Many issues can be resolved informally, without the need to use the formal stages of the complaints procedure. Misson Primary School takes concerns seriously and will make every effort to resolve the matter as quickly as possible.

If you have difficulty discussing a concern with a particular member of staff, we will respect your views. In these cases, the Head Teacher, will refer you to another staff member. Similarly, if the member of staff directly involved feels unable to deal with a concern, the Head Teacher will refer you to another staff member. The member of staff may be more senior but does not have to be. The ability to consider the concern objectively and impartially is more important.

We understand however, that there are occasions when people would like to raise their concerns formally. In this case, Misson Primary School will attempt to resolve the issue internally, through the stages outlined within this complaints procedure.

Guidance on how to raise a concern or make a complaint

A concern or complaint can be made in person, in writing or by telephone. They may also be made by a third party acting on behalf of a complainant, as long as they have appropriate consent to do so. We may ask you for evidence of this consent.

Concerns should be raised initially with either the class teacher or headteacher. If the issue remains unresolved, the next step is to make a formal complaint.

Complainants should not approach individual governors to raise concerns or complaints. They have no power to act on an individual basis and it may also prevent them from considering complaints at later stages of the procedure.

Complaints against school staff (except the headteacher) should be made in the first instance, to the headteacher via the school office. Please mark them as Private and Confidential.

Complaints that involve or are about the headteacher should be addressed to the Chair of Governors, via the school office. Please mark them as Private and Confidential.

Complaints about the Chair of Governors, any individual governor or the whole governing body should be addressed to the Clerk to the Governing Body via the school office. Please mark them as Private and Confidential.

For ease of use, a template complaint form is included at the end of this procedure. If you require help in completing the form, please contact the school office. You can also ask third party organisations like the Citizens Advice to help you.

Our office staff will deal with correspondence confidentially in order to reach the recipient securely and promptly (e.g. to the Chair of Governors or Clerk to Governors). This may mean that your correspondence is opened and scanned to be electronically provided to the recipient. All correspondence will be kept confidentially and appropriately in accordance with school systems and procedures.

Please note that a copy of the written complaint will be provided to the person(s) you are complaining about in order for them to be able to provide a full response. If you do not wish for the full written complaint to be provided to the person(s) you must indicate this in your written complaint/ or on the complaint form. In this case, an agreed summary of the complaint will then be provided to the person(s) you are complaining about in order for them to respond.

In accordance with equality law, we will consider making reasonable adjustments if required, to enable complainants to access and complete this complaints procedure. For instance, providing information in alternative formats, assisting complainants in raising a formal complaint or holding meetings in accessible locations.

Anonymous complaints

We will not normally investigate anonymous complaints. The Headteacher or Chair of Governors, if appropriate, will determine whether the complaint warrants an investigation. However, the outcome of any investigation cannot be provided to an anonymous complainant.

Time scales

You must raise the complaint within 3 months of the incident or, where a series of associated incidents have occurred, within 3 months of the last of these incidents. We will consider complaints made outside of this time frame if exceptional circumstances apply.

Complaints received outside of term time

We will consider complaints made during school holidays to have been received on the first school day after the holiday period.

Duplicate Complaints

After a complaint has been closed, if the school receives a duplicate (or substantially the same) complaint from a partner, spouse, grandparent, child or other person in a close relationship with the original complainant, the school can inform the new complainant that the school has already considered the complaint and the process is now complete. If there are any new aspects to the complaint, the new aspects alone will be considered in line with the procedure.

Complaint Campaigns

If the school receive a large volume of complaints of substantially the same nature, the Chair of Governors will appoint an appropriate person to investigate the complaints at Stage 1 of the procedure. In these circumstances it may not be possible to meet with all individual complainants or correspond with them individually. Once the investigation is concluded, the investigating person may choose to write to each complainant with an outcome, or the school can respond with a template response to all complainants or by publishing a single response on the school website. Taking into account the volume of complaints received, it may not be possible to offer a Stage 2 Governor Complaints Panel meeting for those complainants who remain dissatisfied with the Stage 1 response. However, alternative arrangements may be provided by the school to respond to any outstanding elements of the complaint which could be in writing for example.

Complaints raised using Social Media

Concerns or complaints must be raised using this complaints procedure in order to ensure the best outcome for all parties. Misson Primary School will not formally respond to complaints or concerns raised on Social Media platforms but may contact individuals to guide them to use the complaints procedure and to request the removal of such content on social media in line with school social media policies.

Mediation/Facilitated Discussions

The purpose of this procedure is to consider and find a resolution to your concern or complaint. Open dialogue is usually the best way to promote understanding and hopefully find a satisfactory resolution to your concern or complaint. We may at any point in this procedure invite you to consider taking part in a meeting to discuss your concern or complaint so that we can explore together the best way to reach a satisfactory conclusion. As the complainant, you may also ask the school to engage in a discussion. All parties must consent to attend a meeting of this nature in order for it to proceed. In the event that a meeting does go ahead, the procedure will simply be “paused” at the stage it has reached, recommencing at that stage if the meeting does not result in a satisfactory conclusion. If felt beneficial, a neutral third party may be invited to facilitate the discussion if agreed in advance by all parties. This could be an officer from the Local Authority or someone from the Diocese if a church school for example.

Scope of this Complaints Procedure

This procedure covers all complaints about any provision of community facilities or services by Misson Primary School. Any third-party providers offering community facilities or services through the school premises, or using school facilities, should

have their own complaints procedure in place, and complaints about these services will not be considered through this policy.

Complaints that are outside of this procedure will be dealt with under other statutory procedures, including those listed below.

Exceptions to this procedure	Who to contact
<ul style="list-style-type: none"> • Admissions to schools • Statutory assessments of Special Educational Needs • School re-organisation proposals 	Concerns about admissions, statutory assessments of Special Educational Needs, or school re-organisation proposals should be raised with Nottinghamshire County Council Contact us Nottinghamshire County Council or call the Customer Service Team on 0300 500 800.
<input type="checkbox"/> Matters likely to require a Child Protection Investigation	Complaints about child protection matters are handled under our child protection and safeguarding policy and in accordance with relevant statutory guidance. If you have serious concerns, you may wish to contact the Local Authority Designated Officer (LADO) who has local responsibility for safeguarding or the Multi-Agency Safeguarding Hub (MASH) . Tel: 0300 500 8090. Email: mash.safeguarding@nottscc.gov.uk
<input type="checkbox"/> Exclusion of children from school*	Further information about raising concerns about exclusion can be found at: www.gov.uk/school-discipline-exclusions/exclusions . <i>*complaints about the application of the behaviour policy can be made through the school's complaints procedure.</i>
<input type="checkbox"/> Whistleblowing	We have an internal whistleblowing procedure for all our employees, including temporary staff and contractors. The Secretary of State for Education is the prescribed person for matters relating to education for whistleblowers in education who do not want to raise matters direct with their employer. Referrals
	can be made at: www.education.gov.uk/contactus . Volunteer staff who have concerns about our school should complain through the school's complaints procedure. You may also be able to complain directly to the Local Authority or the Department for Education (see link above), depending on the substance of your complaint.
<input type="checkbox"/> Staff grievances	Complaints from staff will be dealt with under the school's internal grievance procedures.

<input type="checkbox"/> Staff conduct	<p>Complaints about staff (including from governors) will be dealt with under the school's internal disciplinary procedures, if appropriate.</p> <p>Complainants will not be informed of any disciplinary action taken against a staff member as a result of a complaint. However, the complainant will be notified that the matter is being addressed in line with school's internal procedures.</p>
<input type="checkbox"/> Complaints about services provided by other providers who may use school premises or facilities	<p>Providers should have their own complaints procedure to deal with complaints about service. Please contact them direct.</p>
<input type="checkbox"/> National Curriculum - content	<p>Please contact the Department for Education at: www.education.gov.uk/contactus</p>

If other bodies are investigating aspects of the complaint, for example the police, local authority (LA) safeguarding teams or Tribunals, this may impact on our ability to adhere to the timescales within this procedure or result in the procedure being suspended until those public bodies have completed their investigations.

If a complainant commences legal action against Misson Primary School in relation to their complaint, we will consider whether to suspend the complaints procedure in relation to their complaint until those legal proceedings have been concluded.

Withdrawal of a Complaint

If a complainant wants to withdraw their complaint at any stage of the procedure, we will ask them to confirm this in writing. Once received, we will confirm in writing to the complainant that this matter is now closed and the complaints process will cease. If the complainant indicates verbally that they wish to withdraw the complaint, but does not confirm this in writing, we will write to the complainant to advise them that the complaint is closed.

Resolving complaints – the procedure.

At each stage in the procedure, Misson Primary School wants to resolve the complaint. If appropriate, we will acknowledge that the complaint is upheld in whole or in part. In addition, we may offer one or more of the following:

- an explanation
- an admission that the situation could have been handled differently or better
- an assurance that we will try to ensure the event complained of will not recur
- an explanation of the steps that have been or will be taken to help ensure that it will not happen again and an indication of the timescales within which any changes will be made
- an undertaking to review school policies in light of the complaint
- an apology.

Informal Stage

Many concerns will be dealt with informally when you make them known to us. The first point of contact should be your child's teacher. If your concerns are in respect of a particular member of staff, you should contact the Headteacher. There is no need at

this stage to make your concerns known in writing, but the staff member responsible for resolving the matter will keep a note of the nature of your concerns and any agreed actions.

Once your concern is made known to us, we will contact you by telephone or in writing as soon as possible and we may make arrangements to meet with you to discuss your concerns and desired outcomes in more detail to gain a better understanding. Our focus in this informal stage will be to seek clarification on your complaint and find a resolution. We will also consider how we can work with you positively to find a way forward. Any actions or monitoring of the situation that has been agreed will be communicated clearly and confirmed in writing to you.

If necessary, we will contact appropriate people who may be able to assist us with our enquiries into your concerns. We will normally update you on the progress of our enquiries within **10 school days**. Once we have responded to your concern, you will have the opportunity of asking for the matter to be considered further. We would expect that the majority of concerns or complaints will be resolved at this early stage.

If you are still dissatisfied following this informal approach, or we consider that a formal approach is now required, your concern will become a formal complaint and we will deal with it at the next stage (Stage 1).

Stage 1 – Formal Complaint

This stage in our procedures deals with written complaints or when the informal stage has not successfully reached a resolution. It applies where you do not feel the informal approach has dealt with your concern. You should submit your written complaint (please use the Complaints Form included in this procedure) within **10 school days** at the end of discussions to resolve your complaint at the informal stage.

Normally, your written complaint should be addressed to the Headteacher/Principal. If, however, your complaint concerns the Headteacher/Principal personally, it should be sent to the school marked “for the attention of the Chair of Governors” and should be marked private and confidential. Your written complaint should clearly state the reason for your complaint and what resolution you are seeking.

We will acknowledge your complaint in writing as soon as possible after receiving it. This will usually be within **3 school days**. The acknowledgement letter will detail who will be investigating your complaint. This could be the Headteacher/Principal (or a member of the senior leadership team delegated by the Headteacher to investigate, but not reach a decision on the complaint), Chair of Governors, Complaints Governor or another suitably experienced and impartial person nominated by the school.

Normally, we would expect to respond in full to your complaint within **15 school days** but if this is not possible, we will write to explain the reason for the delay and let you know when we hope to be able to provide a full response.

As part of our consideration of your complaint, we would usually invite you to a meeting to discuss the complaint in order to fully understand the matters concerning you and how you feel the complaint can be resolved. If you wish, you can ask someone to accompany you to help you explain the reasons for your complaint.

The person investigating your complaint may also be accompanied by a suitable person if they wish. A note-taker may also be present.

Following the meeting, the person investigating your complaint will, where necessary, talk to witnesses and take statements from others involved who may also be accompanied. If the complaint centres on a pupil, we may talk to the pupil concerned and, where appropriate, others present at the time of the incident in question. Witnesses will be reminded that the statements they make, whilst confidential, may be used as evidence later in the procedure and could therefore be seen by other parties considering the complaint (e.g. Governor Complaints Panel members). It may be necessary to redact or remove the identity of the person giving the statement or any third party it may mention e.g. another pupil.

When investigating particularly sensitive or confidential complaints, all parties will need to be mindful of confidentiality and data protection and careful consideration should be given to who is accompanying parties in the investigation and how confidentiality can be maintained.

We will normally talk to pupils with a parent or carer present, unless this would delay the investigation of a serious or urgent complaint, or where a pupil has specifically said that they would prefer the parent or carer not to be involved. In such circumstances, we will ensure that another member of staff, with whom the pupil feels comfortable, is present.

The person investigating your complaint will keep written/typed, signed and dated records of all meetings and telephone conversations, and any other related documentation.

Once the person investigating your complaint has established all the relevant facts, they will send you a written response to your complaint within **15 school days** of the date of receipt of the complaint. The response will detail any actions taken to investigate the complaint and provide a full explanation of their decision and the reasons for it. Where appropriate, it will include details of actions we will take to resolve the complaint. You may be invited to a meeting to discuss the outcome as part of our commitment to building and maintaining good relations with you.

The person investigating your complaint may decide that we have done all we can to resolve the complaint, in which case we may use our discretion to close the complaint at this point. Please see the "Closure of Complaints" section below for further information about this process.

If you remain dissatisfied with the outcome of your complaint at Stage 1, you may wish to proceed to Stage 2, as detailed below.

If your complaint is jointly about the Chair and Vice Chair, the entire governing body or the majority of the governing body, Stage 1 will be considered by an independent investigator appointed by the governing body or Chair following the process outlined above. Advice on the appointment of an independent investigator may be taken from the Local Authority or Diocese as appropriate.

Stage 2 - Consideration by a Governors Complaints Panel

If your complaint has already been through Stage 1 and you are not satisfied with the outcome you can ask for your complaint to be considered at a Governors Complaints Panel which is the final stage of the complaints procedure. Should your complaint be upheld at Stage 1, a request to move to Stage 2 may be refused. You will be advised of this in writing by the Chair of Governors and the decision will be final.

At Stage 2, a Governor Complaints Panel consisting of 3 unbiased and impartial governors will be convened to consider the aspects of your complaint where you remain unsatisfied and the resolution you are seeking. If necessary, the Chair can appoint governors (or associate members) from another school to be present on the panel. Where required, advice can be sought from the Diocese or Local Authority (as appropriate) to secure independent panel members.

The Governors Complaints Panel hearing operates according to the following formal procedures:

Within **10 school days** of receiving the outcome of your complaint at Stage 1, you must write to the

Chair of Governors (or the Clerk to Governors via the school office if the complaint is about the Chair) clearly stating the reasons for your appeal against that outcome. Requests received outside of this time frame will only be considered if exceptional circumstances apply.

You should state specifically why you are not satisfied with the outcome at Stage 1 and what resolution you are seeking. If the reasons for your appeal against the outcome at Stage 1 are not clear, the school may come back to you for further clarity. If clarification is not received from you, the Chair of Governors may consider that there may be a case to close the complaint without a Stage 2 Governors Complaints Panel, as detailed in the procedure below (Closure of Complaint Section). The Governor Complaints Panel will not normally review any new complaints at this stage or consider evidence unrelated to the initial complaint to be included. New complaints should be dealt with from Stage 1 of the procedure.

A clerk will be appointed who will acknowledge your request to move to Stage 2 and will convene a panel of three governors. The clerk will aim to arrange for the panel meeting to take place within **20 school days** of acknowledging your request for a panel meeting (subject to the availability of all parties).

You will be asked by the clerk whether you wish to provide any further written documentation in support of your appeal. You should only provide information that is relevant up to the time of raising your concerns and not issues that have arisen subsequent to the investigation findings. You will also be asked whether you will be calling any witnesses and if you are being accompanied by a companion.

The Headteacher and/or person who investigated your complaint (as appropriate) will also be asked to submit documentation related to the investigation and the outcome in response to your appeal. They will also be asked to provide details of any witnesses that they intend to call and any companions.

Please note that representatives from the media are not permitted to attend. As the Governor Complaints Panel meeting is not a form of legal proceeding, legal representation would not normally be permitted.

All parties will be asked for dates when they will be available and you will be informed, at least **10 school days** in advance, of the date, time and place of the meeting and who will be attending including witnesses and companions. We hope you will feel comfortable with the meeting taking place in the school but we will do what we can to make alternative arrangements if you prefer. You should advise when you submit your grounds of appeal (or as soon as possible thereafter) if you would prefer for the meeting to take place at an alternative venue.

The clerk will provide all parties with a date to submit the documentation and names of witnesses/companions which **must** be adhered to. Once all the documentation has been received, the clerk will collate and distribute the papers to all parties, **at the same time** at least **5 school days** prior to the panel meeting. All parties will receive copies of all the papers presented for consideration by the Governor Complaints Panel. The panel will not normally accept, as evidence, recordings of conversations that were obtained covertly and without the informed consent of all parties being recorded.

With the invite letter, you will be provided with a copy of the Procedure for the Governor Complaints Panel Hearing which explains what will happen at the hearing.

If you reject the offer of 3 proposed dates, without good reason, the clerk will decide when to hold the meeting. It will then proceed in your absence on the basis of written submissions from all parties.

The chair of the panel will bear in mind that the formal nature of the meeting can be intimidating for you and will do their best to put you at your ease.

As a general rule, no evidence (documentary or otherwise) or witnesses previously undisclosed should be introduced into the hearing by any of the participants. If any party wishes to do so, a request must be made to the panel and, if allowed, the hearing will be adjourned so that the other parties have a fair opportunity to consider and respond to the new evidence. The adjournment will be managed by the clerk.

The chair of the panel will ensure that the hearing is properly minuted. The minutes are strictly confidential and should not be shared with parties external to the process. You may not record the meeting without the express permission of the chair of the panel and this is not normally something that is allowed. Such recordings can often be a hindrance and may prevent all parties from speaking freely. It is advisable that no parties make covert recording of the meeting as this may hinder a satisfactory resolution to the complaint. However, recording may be permitted if a complainant's own disability or special needs require it. Consent must be sought from all parties prior to the meeting and consent will be recorded in any minutes taken.

During the meeting, the panel will consider the complaint and all the evidence presented to it. In closing the meeting, the chair will explain that the panel will now consider its decision and that written notice of the decision will be sent to you by the clerk within **5 school days**. However, if this timescale cannot be met, you will be advised accordingly and a new timescale determined.

The Governor Complaints Panel can make the following decisions:

- Dismiss or uphold the complaint in whole or in part
- Decide on the appropriate action to be taken to resolve the complaint, if it is upheld in whole or in part
- Recommend changes to the schools systems and procedures to ensure that problems of a similar nature do not reoccur.

The Chair of the Panel (or the Clerk on behalf of the Chair) will provide the complainant with a full explanation of their decision and the reason(s) for it, in writing, within **5 school days**. A copy of the letter will also be sent to the Headteacher/Principal, the Chair of Governors and the person who investigated your complaint (as appropriate). The letter to the complainant will also include details of how to contact the Department for Education if they are dissatisfied with the way their complaint has been handled. We will keep a copy of all correspondence and notes on file in the school's records but separate from any pupils' personal records whilst the complaint is ongoing. Data will be held in line with the school data handling procedures.

If at any formal stage of the complaint it is determined that staff disciplinary or capability proceedings are necessary in order to resolve the issue, the details of this action will remain confidential to the headteacher/principal and/or the individual's line manager. You are not entitled to participate in those proceedings or receive any detail about them.

If your complaint is:

- jointly about the Chair and Vice Chair or
- the entire governing body or
- the majority of the governing body

Stage 2 will be heard by a committee of three independent governors following the process outlined above. Support will be sought from NCC Governor Services to facilitate this.

Final Steps

If you believe the school did not handle your complaint in accordance with the published complaints procedure or they acted unlawfully or unreasonably in the exercise of their duties under education law, you can contact the Department for Education after Stage 2 has been completed.

The Department for Education will not normally reinvestigate the substance of complaints or overturn any decisions made by Misson Primary School. They will consider whether Misson Primary School has adhered to education legislation and any statutory policies connected with the complaint.

You can refer your complaint to the Department for Education online at: www.education.gov.uk/contactus, by telephone on: 0370 000 2288 or by writing to:

Department for Education

Piccadilly Gate

St

or

e

St

re

et

M

an

ch

es

ter

M

1

2

W

D.

Managing serial or unreasonable complaints

Note - This policy can be adapted to manage unreasonable or persistent contact not directly associated with, or resulting from, formal complaints.

Misson Primary School is committed to dealing with all complaints fairly and impartially, and to providing a high quality service to those who complain. We will not normally limit the contact complainants have with our school. However, we do not expect our staff to tolerate unacceptable behaviour and will take action to protect staff from that behaviour, including that which is abusive, offensive or threatening.

Misson Primary School defines unreasonable behaviour as that which hinders our consideration of complaints because of the frequency or nature of the complainant's contact with the school, such as, if the complainant:

- refuses within a reasonable timeframe to articulate their complaint or specify the grounds of a complaint or the outcomes sought by raising the complaint, despite offers of assistance
- refuses to co-operate with the complaints investigation process
- refuses to accept that certain issues are not within the scope of the complaints procedure
- insists on the complaint being dealt with in ways which are incompatible with the complaints procedure or with good practice
- introduces trivial or irrelevant information which they expect to be taken into account and commented on
- raises large numbers of detailed but unimportant questions, and insists they are fully answered, often immediately and to their own timescales
- makes unjustified complaints about staff who are trying to deal with the issues, and seeks to have them replaced
- changes the basis of the complaint as the investigation proceeds
- repeatedly makes the same complaint (despite previous investigations or responses concluding that the complaint is groundless or has been addressed)
- refuses to accept the findings of the investigation into that complaint where the school's complaint procedure has been fully and properly implemented and completed including referral to the Department for Education
- seeks an unrealistic outcome
- makes excessive demands on school time by frequent, lengthy and complicated contact with staff regarding the complaint in person, in writing, by email and/or by telephone while the complaint is being dealt with
- uses threats to intimidate
- uses abusive, offensive or discriminatory language or violence
- knowingly provides falsified information
- publishes unacceptable information on social media or other public forums.

You should try to limit your communication with the school that relates to your complaint, while the complaint is being progressed. It is not helpful if repeated correspondence is sent (either by letter, phone, email, or via social media), as it could delay the outcome being reached.

Whenever possible, the headteacher or Chair of Governors will discuss any concerns with you informally before determining your behaviour/actions are unreasonable.

If your behaviour continues, the headteacher will write to you explaining that their behaviour is unreasonable and ask you to change it. For complainants who excessively contact Misson Primary School causing a significant level of disruption, we may specify methods of communication and limit the number of contacts in a communication plan. This will be reviewed after six months.

In response to any serious incident of aggression or violence, we will immediately inform the police and communicate our actions in writing. This may include barring an individual from Misson Primary School in accordance with the Department for Education guidance on controlling access to school premises.

Closure of Complaints

Very occasionally, the school will feel that it needs, regrettably, to close a complaint where the complainant is still dissatisfied.

We will do all we can to help to resolve a complaint against the school but sometimes it is simply not possible to meet all of the complainant's wishes. Sometimes it is simply a case of "agreeing to disagree".

If a complainant persists in making representations to the school – to the Headteacher/Principal, Chair of Governors, Local Authority or anyone else – this can be extremely time-consuming and can detract from our responsibility to look after the interests of all the children in our care.

The Chair of Governors will write to the complainant explaining that the matter has been dealt with fully in line with the school complaints procedure, and therefore the case is now closed.

After closing a complaint, if the school receives a duplicate (or substantially the same) complaint from a partner, spouse, grandparent, child or other person in a close relationship with the original complainant, the school can inform the new complainant that the school has already considered the complaint and the process is now complete.

In exceptional circumstances, closure may occur before a complaint has reached Stage Two of the complaint procedure. This is because a Governor Complaints Panel takes considerable time and effort to set up and we must be sure that it is likely to assist the process of resolving the complaint.

The Chair of Governors may decide, therefore, that every reasonable action has been undertaken to resolve the complaint and that a Governor Complaints Panel would not help to move things forward.

The complainant will be provided with the contact details of the Department for Education (as detailed above) if they wish to take the matter further.



Complaint Form

Please complete and return to the Head Teacher/designated Governor who will acknowledge receipt and explain what action will be taken.

Your name:

Pupil's name (if relevant):

Your relationship to the pupil (if relevant):

Address:

Postcode:

Day time telephone number:

Evening telephone number: Email

Address:

Please give details of your complaint, including whether you have spoken to anybody at the school about it.



What actions do you feel might resolve the problem at this stage?

Are you attaching any paperwork? If so, please give details.

Signature:

Date:

Official use

Date acknowledgement sent:

By who:

Complaint referred to:

Date:

Please note that a copy of the written complaint will be provided to the person(s) you are complaining about in order for them to be able to provide a full response. If you do not wish for the full written complaint to be provided to the person(s) you must indicate this in your complaint/ complaint form. In this case an agreed summary of the complaint will then be provided to the person(s) you are complaining about in order for them to respond.

Appendix 1 Roles and Responsibilities Complainant

The complainant will receive a more effective response to the complaint if they:

- explain the complaint in full as early as possible
- co-operate with the school in seeking a solution to the complaint
- respond promptly to requests for information or meetings or in agreeing the details of the complaint
- ask for assistance as needed
- treat all those involved in the complaint with respect
- refrain from publicising the details of their complaint on social media and respect confidentiality.

The Role of the Investigator

The investigator's role is to establish the facts relevant to the complaint by:

- providing a comprehensive, open, transparent and fair consideration of the complaint through:
 - sensitive and thorough interviewing of the complainant to establish what has happened and who has been involved
 - interviewing staff and children/young people and other people relevant to the complaint
 - consideration of records and other relevant information
 - analysing information
- liaising with the complainant and the complaints co-ordinator as appropriate to clarify what the complainant feels would put things right.

The investigator should:

- conduct interviews with an open mind and be prepared to persist in the questioning
- keep notes of interviews or arrange for an independent note taker to record minutes of the meeting
- ensure that any papers produced during the investigation are kept securely pending any appeal
- be mindful of the timescales to respond
- prepare a comprehensive report that sets out the facts, identifies solutions and recommends courses of action to resolve problems.

Clerk to the Complaints Panel

The Clerk may be the contact point for the complainant and the committee and should:

- ensure that all people involved in the complaint procedure are aware of their legal rights and duties, including any under legislation relating to school complaints, education law, the Equality Act 2010, the Freedom of Information Act 2000, the Data Protection Act (DPA) 2018 and the General Data Protection Regulations (GDPR)
- set the date, time and venue of the meeting, ensuring that the dates are convenient to all parties (if they are invited to attend) and that the venue and proceedings are accessible
- collate any written material relevant to the complaint (for example; stage 1 paperwork, school and complainant submissions) and send it to the parties in advance of the meeting within an agreed timescale
- record the proceedings
- circulate the minutes of the meeting
- notify all parties of the committee's decision.

Chair of the Governor Complaints Panel

The Chair of the Governor Complaints Panel, who is nominated in advance of the panel meeting, should ensure that:

- both parties are asked (via the Clerk) to provide any additional information relating to the complaint by a specified date in advance of the meeting
- the meeting is conducted in an informal manner, is not adversarial, and that, if all parties are invited to attend, everyone is treated with respect and courtesy
- complainants who may not be used to speaking at such a meeting are put at ease. This is particularly important if the complainant is a child/young person
- the remit of the panel meeting is explained to the complainant
- written material is seen by everyone in attendance, provided it does not breach confidentiality or any individual's rights to privacy under the Data Protection Act 2018 or General Data Protection Regulations.
- both the complainant and the school are given the opportunity to make their case and seek clarity, either through written submissions ahead of the meeting or verbally in the meeting itself
- the issues are addressed
- key findings of fact are made
- the panel is open-minded and acts independently
- no member of the panel has an external interest in the outcome of the proceedings or any involvement in an earlier stage of the procedure
- the meeting is minuted

- they liaise with the Clerk.

Governor Complaints Panel Members

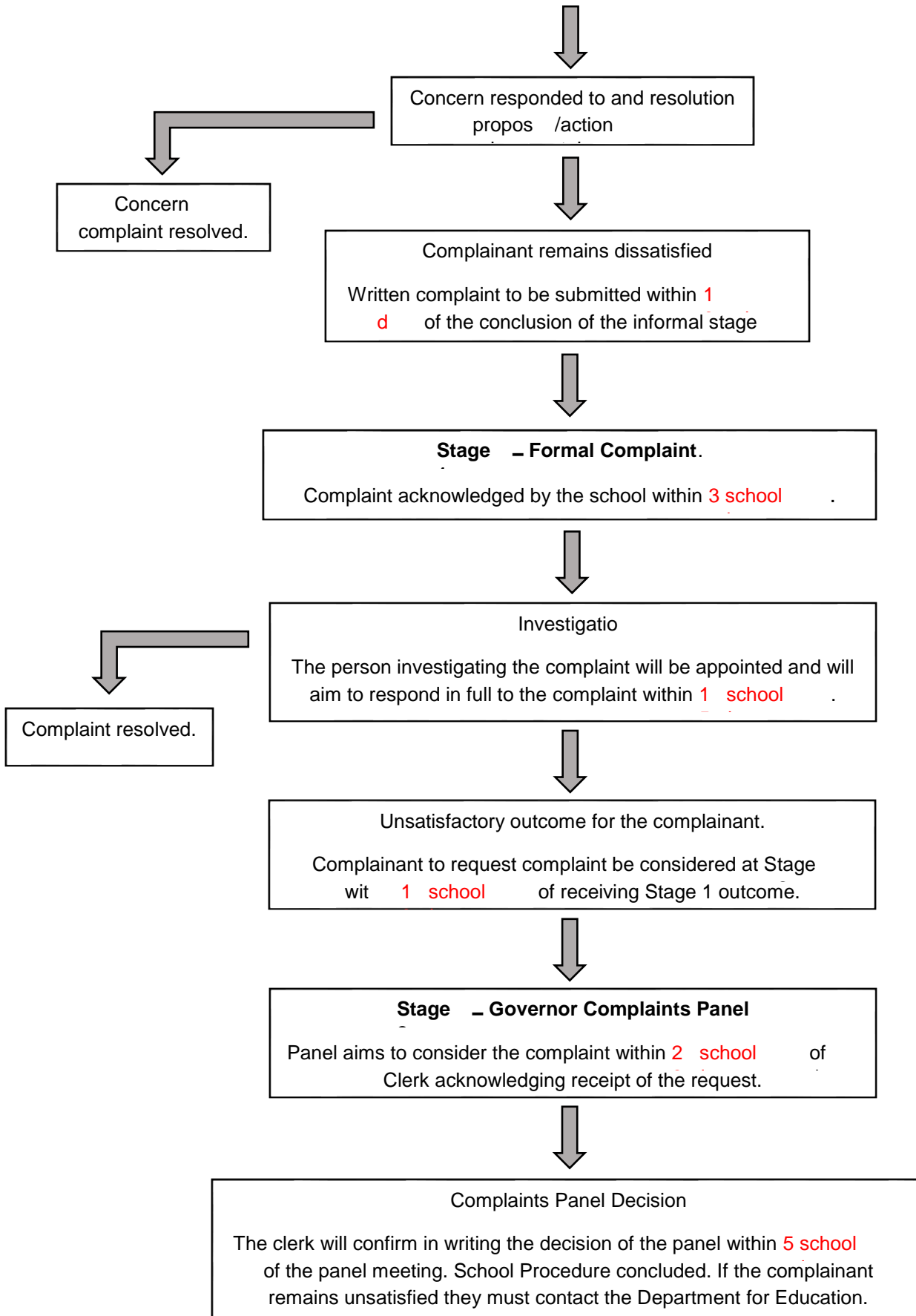
Panel members should be aware that:

- the meeting must be independent and impartial, and should be seen to be so
- No governor may sit on the panel if they have had a prior involvement in the complaint or in the circumstances surrounding it or have any family/personal connection with the complainant.
- the aim of the meeting should be to resolve the complaint and achieve reconciliation between the school and the complainant. We recognise that the complainant might not be satisfied with the outcome if the meeting does not find in their favour. It may only be possible to establish the facts and make recommendations.
- many complainants will feel nervous and inhibited in a formal setting. Parents/carers often feel emotional when discussing an issue that affects their child. Extra care needs to be taken when the complainant is a child/young person and present during all or part of the meeting. Careful consideration of the atmosphere and proceedings should ensure that the child/young person does not feel intimidated.
- The panel should respect the views of the child/young person and give them equal consideration to those of adults. If the child/young person is the complainant, the panel should ask in advance if any support is needed to help them present their complaint. Where the child/young person's parent is the complainant, the panel should give the parent the opportunity to say which parts of the meeting, if any, the child/young person needs to attend. However, the parent should be advised that agreement might not always be possible if the parent wishes the child/young person to attend a part of the meeting that the panel considers is not in the child/young person's best interests.
- **the welfare of the child/young person is paramount.**

Appendix 2

COMPLAINTS PROCEDURE

Informal concern or complaint



Appendix 3

MANAGING SCHOOL COMPLAINTS

Complaint relates to:	Informal	Stage 1 Formal (Investigation)	Stage 2 Complaint Panel
Pupils, parents or staff (other than the Headteacher)	The appropriate member of staff	Headteacher or other Senior Manager	Panel appointed by the Chair of Governors
The Headteacher	No informal stage (go to Stage 1)	The Chair of Governors, Complaints Governor or impartial person nominated by the Chair	Panel appointed by the Chair of Governors (or Vice Chair if the Chair has had previous involvement).
A Governor or group of Governors (other than the Chair of Governors)	No informal stage (go to Stage 1)	Chair of Governors or another nominated non- staff governor (which could include a governor/associate member from another school).	Panel appointed by the Chair of Governors (or Vice Chair if the Chair has had previous involvement) (The panel could include a governor/associate member from another school).
The Chair of Governors (or a group of governors including the Chair of Governors)	No informal stage (go to Stage 1)	Vice chair of Governors or another nominated non-staff governor (which could include a governor/associate member from another school).	Panel appointed by the Vice Chair of Governors. (The panel could include governors or associate members from another school).
The whole body of Governors	No informal stage (go to Stage 1)	School to refer the complaint to Nottinghamshire County Council Governor Services who will nominate an investigating officer.	Nottinghamshire County Council Governor Services to nominate an independent panel of governors or associate members.